



BIDS AND AWARDS COMMITTEE

SUPPLEMENTAL BID BULLETIN NO. 1

**SUPPLY, DELIVERY, INSTALLATION AND TESTING OF VARIOUS HEATED AIR MECHANICAL GRAIN DRYERS
 (PHilMech-RCEF-24-02-07)**

This **Supplemental/Bid Bulletin No. 1** is being issued to clarify, amend and supplement provisions in the Bidding Documents.

A. ISSUES AND CONCERNS DURING THE PRE-BID CONFERENCE

<p>1. <i>Issue / Proposal: Request for more details on the claim for the 50% partial payment.</i></p> <p>Action Taken/Reply: Terms of payment is amended.</p>		
	<p><i>FROM</i></p>	<p><i>TO</i></p>
<p><i>Special Conditions of the Contract</i></p> <p><i>(GCC Clause 2.2)</i></p>	<p><i>The terms of payment shall be as follows:</i></p> <p style="margin-left: 20px;">a. Fifty percent (50%) of the Contract Price per lot: upon delivery of the complete components such as the pre-cleaner, heating system, drying bin, control panel, and the dust collection system conducted with initial inspection of the authorized representatives of PHilMech; and</p> <p style="margin-left: 20px;">b. Remaining Fifty Percent (50%) of the Contract Price per lot: upon 100% completion of the project, final inspection and acceptance, and submission of required documents.</p>	<p><i>The terms of payment shall be as follows:</i></p> <p style="margin-left: 20px;">a. Twenty-Five percent (25%) of the Contract Price per lot: upon delivery of the complete components (50% of the total number of units per lot) such as the pre-cleaner, heating system, drying bin, control panel, and the dust collection system conducted with initial inspection of the authorized representatives of PHilMech;</p> <p style="margin-left: 20px;">b. Twenty-Five percent (25%) of the Contract Price per lot: upon delivery of the complete components (50% of the total number of units per lot) such as the pre-cleaner, heating system, drying bin, control panel, and the dust collection system conducted with initial inspection of the authorized representatives of PHilMech; and</p> <p style="margin-left: 20px;">c. Remaining Fifty Percent (50%) of the Contract Price per lot: upon 100% completion of the project, final inspection and acceptance, and submission of required documents.</p>

Main Office: CLSU, Science City of Muñoz, Nueva Ecija, Philippines
 Mobile Nos.: (+63) 917-800-4526/ (+63) 917-813-0852

Liaison Office: 3rd Floor, ATI Bldg., Elliptical Road, Diliman, Quezon City



2. <i>Issue / Proposal: Request clarification if the design for the concrete platform for the transformer is a supplier's standard.</i>		
Action Taken/Reply: Design/layout for the transformer's concrete/platform is hereby attached as Annex A.		
3. <i>Issue / Proposal: Suggestion that PHilMech and the local electric cooperative will enter into a sort of agreement to give priority to the electrical connection of the dryer for faster contract implementation.</i>		
Action Taken/Reply: The PHilMech cluster staff will provide assistance during the coordination with the electric cooperative.		
4. <i>Issue / Proposal: In connection with the memorandum issued by the office of USEC Navarro regarding the performance of a previous contract, Inquire if they needed to acquire performance evaluations from their previous contracts.</i>		
Action Taken/Reply: This concern is already considered in this project particularly the requirement on (Certification of Very Satisfactory Performance of the Heated Air Mechanical Grain Dryer being offered sold within the last three (3) years from the date of bid opening as to: i) Machinery Performance; ii) Machinery Durability; and, iii) Availability of Parts and Service)		
5. <i>Issue / Proposal: Request clarification on the discharge chute placement.</i>		
Action Taken/Reply: Discharge chute placement is the supplier's standard.		
6. <i>Issue / Proposal: Request clarification if the required pre-cleaner is a direct feeder or separate from the dryer.</i>		
Action Taken/Reply: The palay from the pre-cleaner is directly fed to the dryer.		
7. <i>Issue / Proposal: Inquiry on PHilMech's solution wherein the wiring of generator sets was bitten by rodents in the warehouse.</i>		
Action Taken/Reply: The generator set to be supplied to the recipient is secured from all pests, like rodents. (e.g., purchase a generator set that is fully closed; block all access).		
8. <i>Issue / Proposal: Request clarification if the holding bin is optional.</i>		
Action Taken/Reply: Holding bin must be provided.		
	FROM	TO
Technical Specifications	With the following compatible accessories: 7. Provision of disposal cart for the ashes 8. Automatic portable bag/sack closer/sewer	With the following compatible accessories: 7. Provision of disposal cart for the ashes 8. Holding Bin 9. Automatic portable bag/sack closer/sewer

Issued this 27th day of February 2024 in the Science City of Muñoz, Nueva Ecija, Philippines.

Reviewed and approved by:


NELSON C. SANTIAGO, Ph.D.
 Chairperson, Bids and Awards Committee

Main Office: CLSU, Science City of Muñoz, Nueva Ecija, Philippines
 Mobile Nos.: (+63) 917-800-4526/ (+63) 917-813-0852


Liaison Office: 3rd Floor, ATI Bldg., Elliptical Road, Diliman, Quezon City



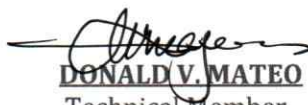
Republic of the Philippines
Department of Agriculture
Philippine Center for Postharvest Development and Mechanization
Science City of Muñoz, Nueva Ecija
www.philmech.gov.ph
ISO 9001:2015, ISO 14001:2015, ISO 45001:2018 CERTIFIED



SUPPLEMENTAL BID BULLETIN NO. 1
SUPPLY, DELIVERY, INSTALLATION AND TESTING OF
VARIOUS HEATED AIR MECHANICAL GRAIN DRYERS
(PHilMech-RCEF-24-02-07)


RAYMUND JOSEPH P. MACARANAS
Vice Chairperson


JERRY F. AVELLANOZA
Regular Member


DONALD V. MATEO
Technical Member


BENNY P. RODEROS
End-User/Provisional Member

CONFORMED:	_____
Bidders Name:	_____
Date Received:	_____

Main Office: CLSU, Science City of Muñoz, Nueva Ecija, Philippines
Mobile Nos.: (+63) 917-800-4526/ (+63) 917-813-0852

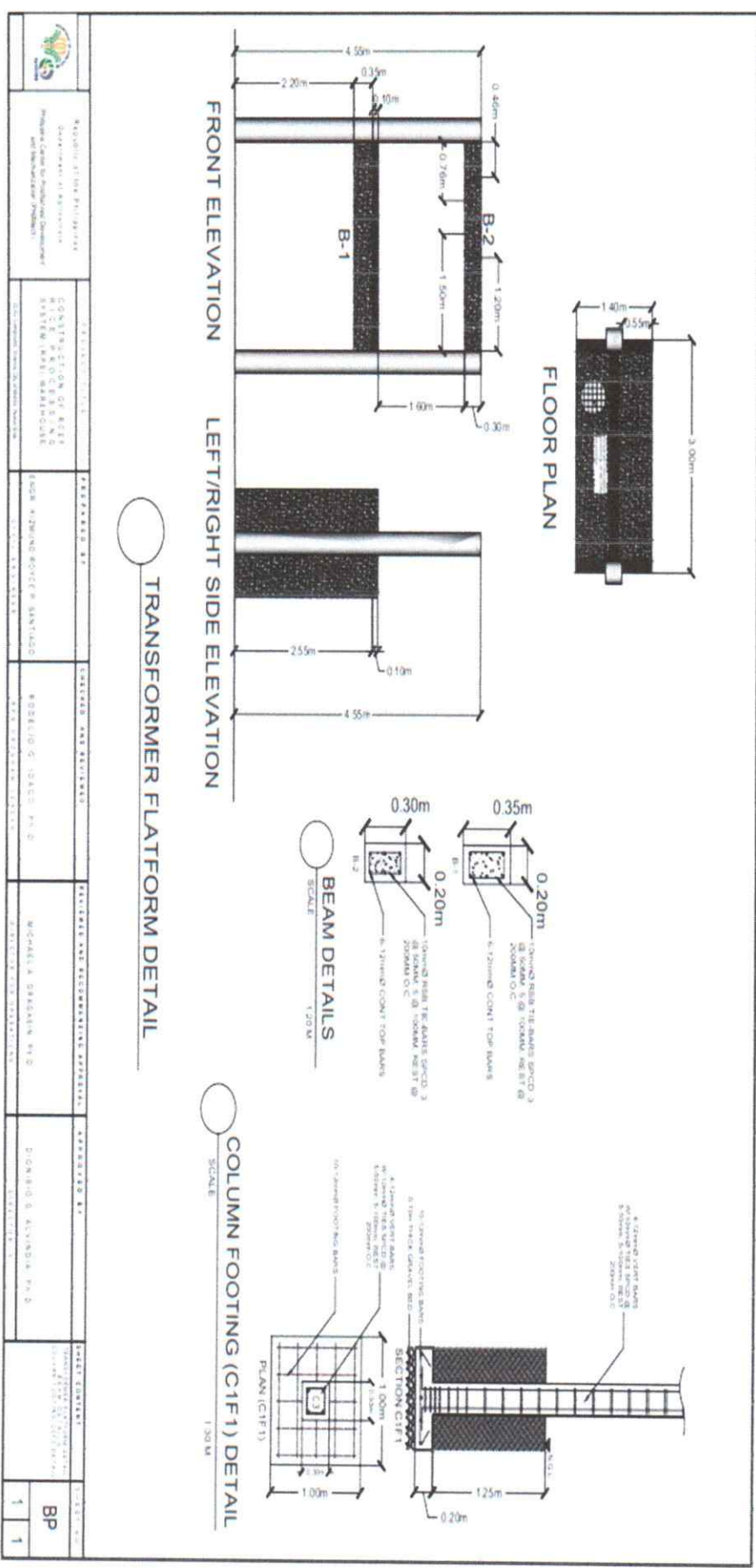
Liaison Office: 3rd Floor, ATI Bldg., Elliptical Road, Diliman, Quezon City



Republic of the Philippines
 Department of Agriculture
Philippine Center for Postharvest Development and Mechanization
 Science City of Muñoz, Nueva Ecija
www.philmech.gov.ph
 ISO 9001:2015, ISO 14001:2015, ISO 45001:2018 CERTIFIED



Annex A



	REVISIONS QUANTITY OF THIS REVISION DATE REVISIONS MADE BY REVISIONS CHECKED BY	REVISIONS QUANTITY OF THIS REVISION DATE REVISIONS MADE BY REVISIONS CHECKED BY	REVISIONS QUANTITY OF THIS REVISION DATE REVISIONS MADE BY REVISIONS CHECKED BY	REVISIONS QUANTITY OF THIS REVISION DATE REVISIONS MADE BY REVISIONS CHECKED BY	REVISIONS QUANTITY OF THIS REVISION DATE REVISIONS MADE BY REVISIONS CHECKED BY	REVISIONS QUANTITY OF THIS REVISION DATE REVISIONS MADE BY REVISIONS CHECKED BY
	APPROVED BY NAME AND SIGNATURE TITLE	APPROVED BY NAME AND SIGNATURE TITLE	APPROVED BY NAME AND SIGNATURE TITLE	APPROVED BY NAME AND SIGNATURE TITLE	APPROVED BY NAME AND SIGNATURE TITLE	APPROVED BY NAME AND SIGNATURE TITLE
PROJECT TITLE PROJECT NO.	PROJECT TITLE PROJECT NO.	PROJECT TITLE PROJECT NO.	PROJECT TITLE PROJECT NO.	PROJECT TITLE PROJECT NO.	PROJECT TITLE PROJECT NO.	PROJECT TITLE PROJECT NO.
DRAWING NO. SHEET NO.	DRAWING NO. SHEET NO.	DRAWING NO. SHEET NO.	DRAWING NO. SHEET NO.	DRAWING NO. SHEET NO.	DRAWING NO. SHEET NO.	DRAWING NO. SHEET NO.

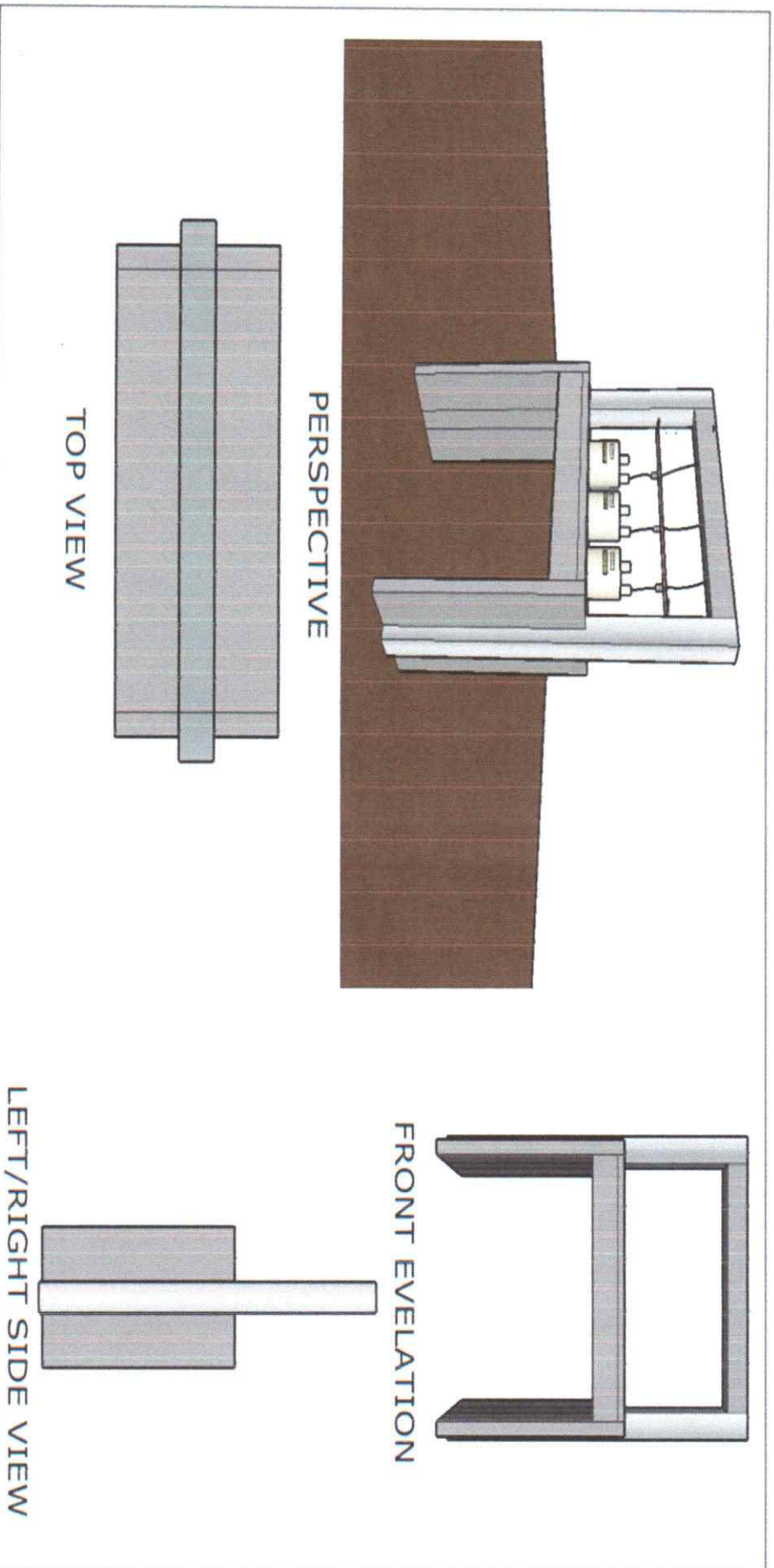
Main Office: CLSU, Science City of Muñoz, Nueva Ecija, Philippines
 Mobile Nos.: (+63) 917-800-4526/ (+63) 917-813-0852

Liaison Office: 3rd Floor, ATI Bldg., Elliptical Road, Diliman, Quezon City

PHIMech-AD-F-192 Rev 01 (07.20.23)



Republic of the Philippines
Department of Agriculture
Philippine Center for Postharvest Development and Mechanization
Science City of Muñoz, Nueva Ecija
www.philmech.gov.ph
ISO 9001:2015, ISO 14001:2015, ISO 45001:2018 CERTIFIED



Main Office:

CLSU, Science City of Muñoz, Nueva Ecija, Philippines
Mobile Nos.: (+63) 917-800-4526/ (+63) 917-813-0852

Liaison Office: 3rd Floor, ATI Bldg., Elliptical Road, Diliman, Quezon City

PHilMech-AD-F-192 Rev 01 (07.20.23)